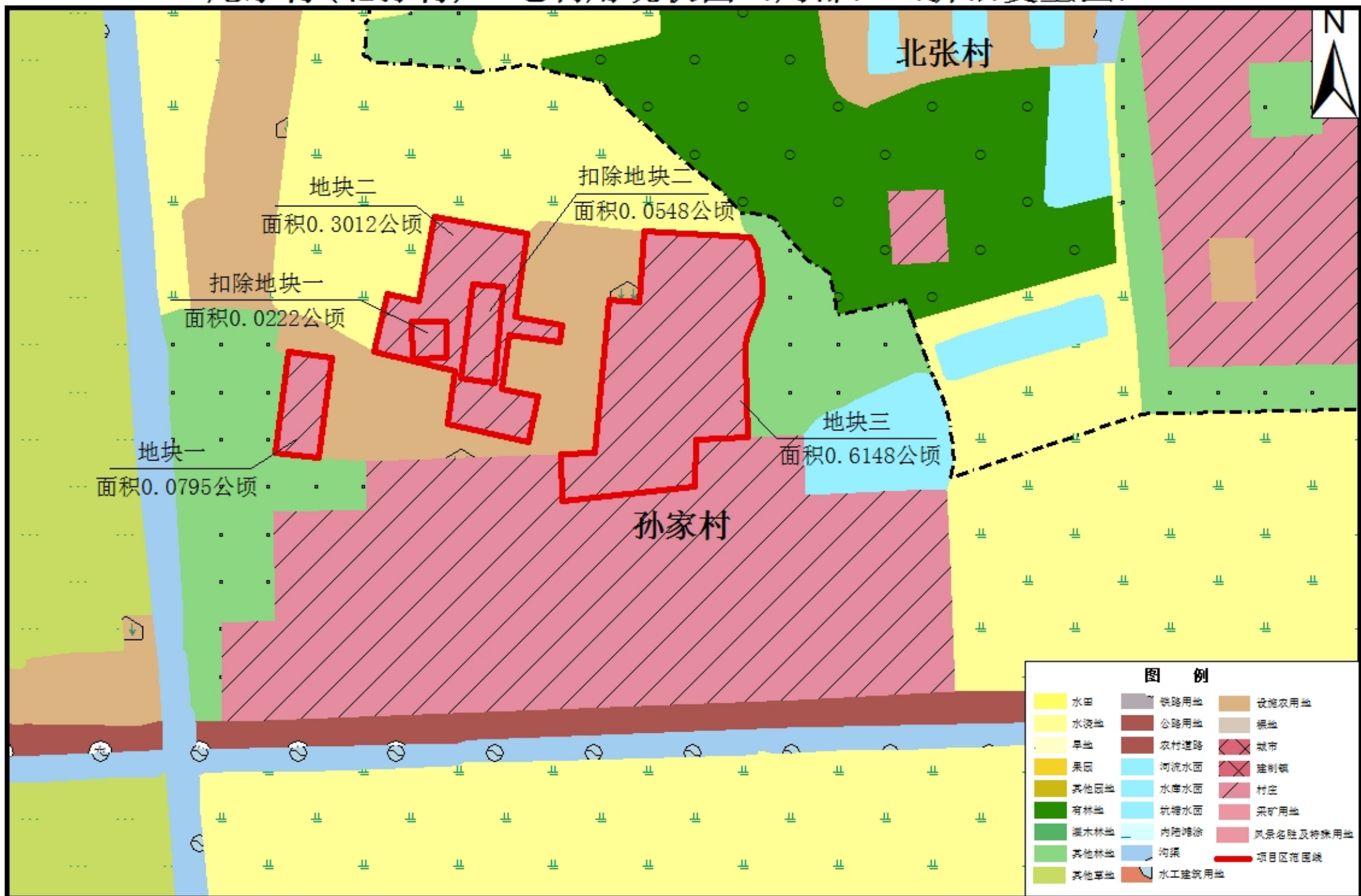
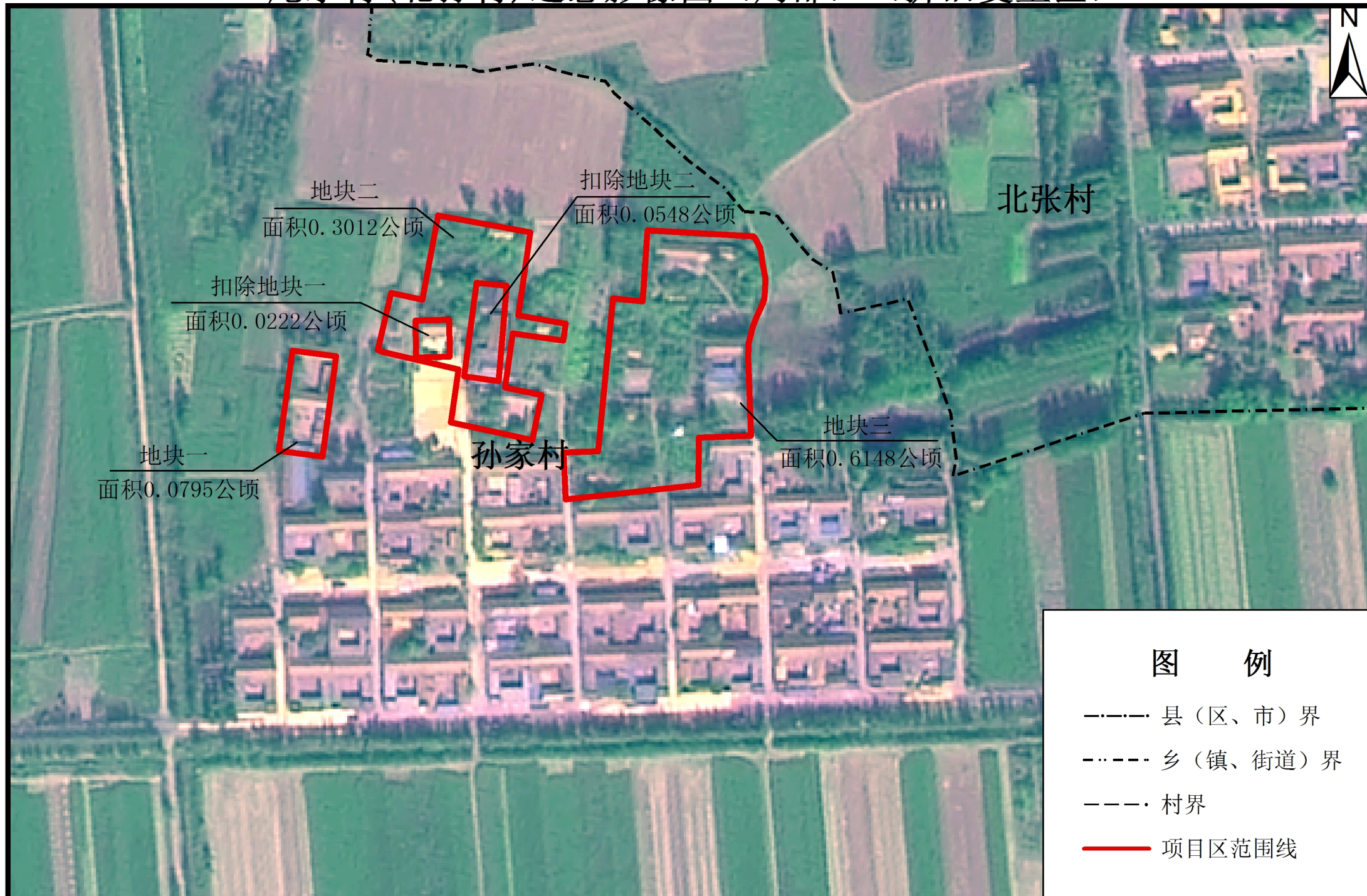


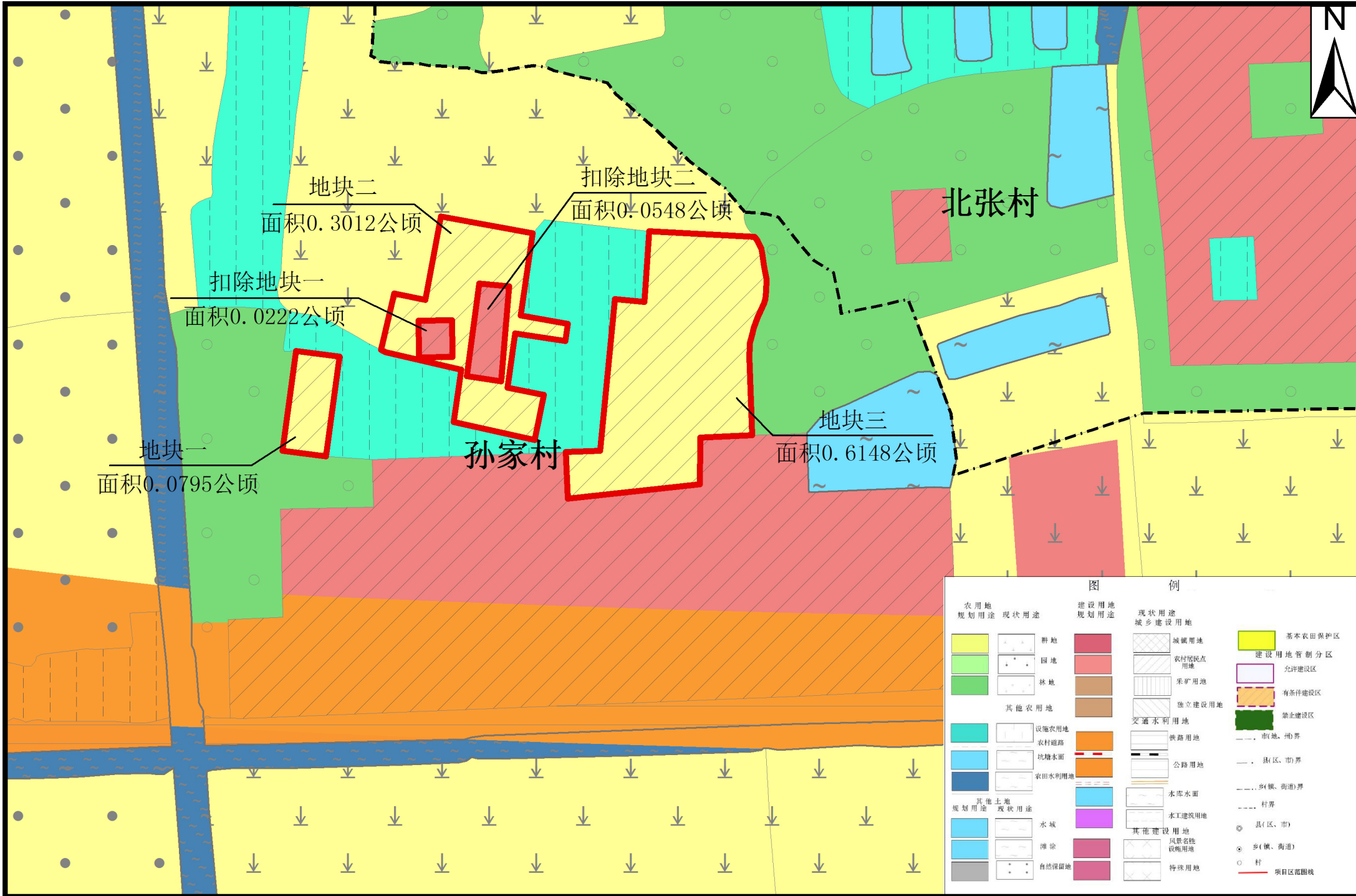
# 庵东村(北孙村)土地利用现状图(局部)(拆旧复垦区)



# 庵东村(北孙村)遥感影像图(局部)(拆旧复垦区)

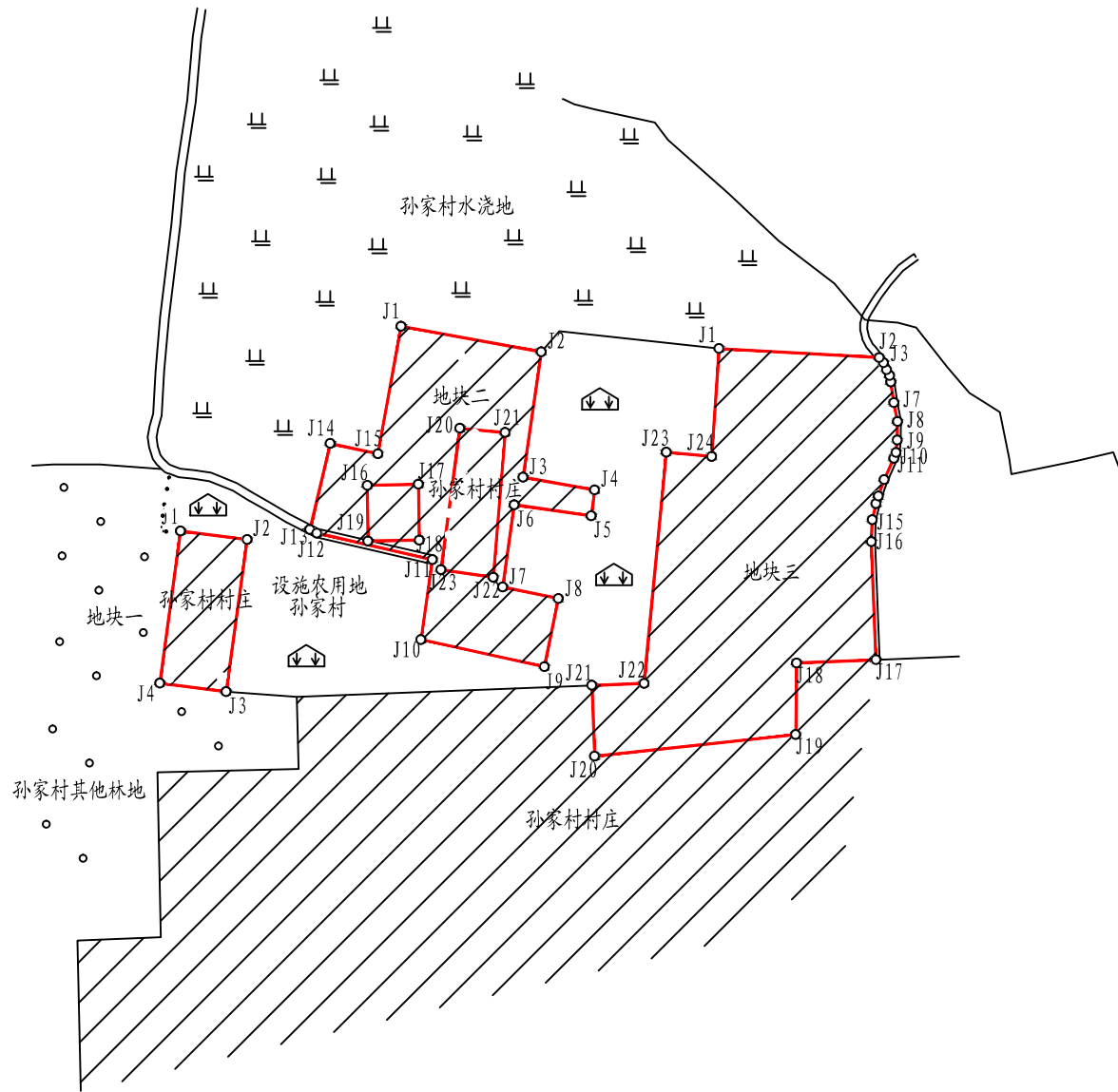


# 庵东村(北孙村)土地利用总体规划图(局部)(拆旧复垦区)



# 2018年度高青县青城镇北孙家村勘测定界图

北



地块二界址点坐标表 (CGCS2000)

点号	X	Y	边长
J1	4119301.390	39564586.829	39.66
J2	4119294.302	39564625.850	35.30
J3	4119259.369	39564620.752	20.25
J4	4119255.850	39564640.693	7.27
J5	4119248.641	39564639.763	21.67
J6	4119251.726	39564618.318	23.14
J7	4119228.812	39564615.087	15.80
J8	4119225.640	39564630.566	19.39
J9	4119206.646	39564626.675	35.15
J10	4119214.198	39564592.349	22.45
J11	4119236.422	39564595.500	32.96
J12	4119243.851	39564563.389	2.19
J13	4119244.846	39564561.439	24.56
J14	4119268.748	39564567.095	13.53
J15	4119265.920	39564580.326	36.06
J16	4119257.142	39564577.383	14.28
J17	4119257.408	39564591.659	15.54
J18	4119241.865	39564591.873	14.28
J19	4119241.599	39564577.597	15.54
J20	4119272.980	39564603.184	12.66
J21	4119271.792	39564615.791	40.40
J22	4119231.527	39564612.443	14.73
J23	4119233.651	39564597.867	39.69
J24	4119272.980	39564603.184	

地块一界址点坐标表 (CGCS2000)

点号	X	Y	边长
J1	4119244.373	39564525.449	18.62
J2	4119242.011	39564543.921	42.71
J3	4119199.699	39564538.121	18.62
J4	4119202.061	39564519.650	42.71
J1	4119244.373	39564525.449	

地块三界址点坐标表 (CGCS2000)

点号	X	Y	边长
J1	4119295.177	39564675.319	44.67
J2	4119292.680	39564719.920	1.89
J3	4119291.200	39564721.096	2.08
J4	4119289.301	39564721.945	1.81
J5	4119287.702	39564722.795	1.87
J6	4119285.853	39564723.095	5.80
J7	4119280.115	39564723.936	5.33
J8	4119274.880	39564724.951	5.16
J9	4119269.724	39564724.873	3.45
J10	4119266.286	39564724.561	1.76
J11	4119264.645	39564723.936	6.50
J12	4119258.708	39564721.279	4.82
J13	4119254.177	39564719.639	2.28
J14	4119251.989	39564719.014	4.59
J15	4119247.536	39564717.920	6.10
J16	4119241.442	39564717.686	32.92
J17	4119208.547	39564718.953	22.09
J18	4119207.694	39564696.881	19.92
J19	4119187.780	39564696.657	56.29
J20	4119181.717	39564640.695	19.75
J21	4119201.451	39564639.926	14.51
J22	4119202.016	39564654.422	64.63
J23	4119266.354	39564660.613	12.70
J24	4119265.177	39564673.260	30.07
J1	4119295.177	39564675.319	

地块一用地面积: 0.0795公顷

其中北孙家村村庄面积: 0.0795公顷

地块二用地面积: 0.3012公顷

其中北孙家村村庄面积: 0.3012公顷

地块三用地面积: 0.6148公顷

其中北孙家村村庄面积: 0.6148公顷

山东天昀和测绘工程有限公司

# 庵东村（北孙村）实施规划图

